



Rathi's
LUXURY
LIVE BEYOND THE FUTURE

The logo for Rathi's Luxury features a stylized golden lotus flower above the word "LUXURY" in a large, green, serif font. The word "Rathi's" is in a smaller, red, serif font above "LUXURY". Below the main text, the tagline "LIVE BEYOND THE FUTURE" is written in a smaller, black, sans-serif font.

2 BHK Lifestyle Apartments @ Kolathur
www.sribhagyahomes.com

SRI BHAGYA HOMES GROUP OF COMPANIES is a dynamic and vibrant real estate developer from Chennai formed to fulfill The aspirations of people to have their own House. SRI BHAGYA HOMES has pledged itself towards fulfilling this aspiration of people and has since 29 Years worked in creating residential plots,Villas and Apartments. The Company Commenced its operations in Chennai in the Year 1994.Its Primary Business is creation of residential plots and building residences.

Its operation span across various aspects of real estate development, such as land identification and acquisition, project planning,desiging,marketing and execution. The Company's vision as a real estate development company is to develop self-reliance in young people and help them to have a home of their own.

Wrapped around this vision is the company's mission to deliver unique integrated lifestyle and work place environments and planned developments.

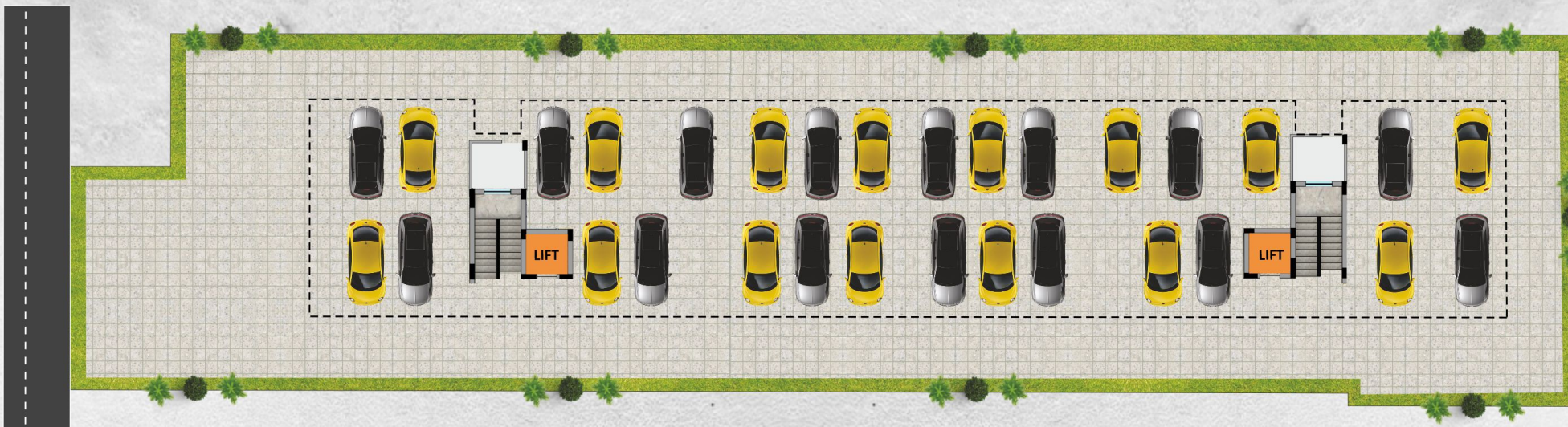


Rathi's
LUXURY
LIVE BEYOND THE FUTURE



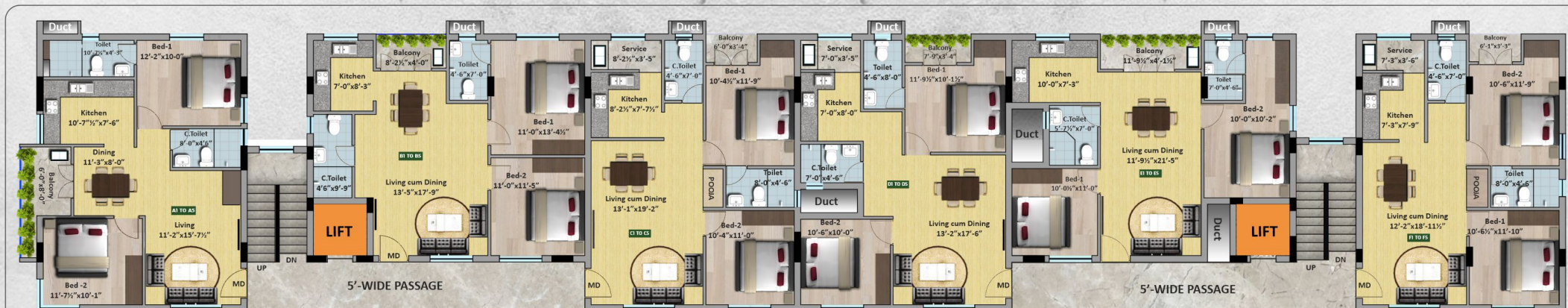
STILT FLOOR PLAN

CAR PARKING



I,II,III,IV&V FLOOR

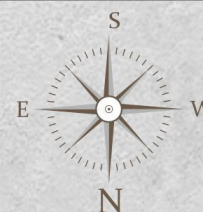
TYPICAL FLOOR PLAN



SITE : Door No: 50/114, Villivakkam Road, Lakshmipuram, Kolathur, Chennai - 600 099



FLAT	UDS	AREA
A1-A5	397	1005
B1-B5	393	996
C1-C5	386	976



FLAT	UDS	AREA
D1-D5	380	963
E1-E5	382	967
F1-F5	381	965

STRUCTURE:

- ◆ RCC Framed structure with concrete black masonry walls
- ◆ Internal walls, external walls and Ceiling - Cement Plastered Surface with smooth finishes

LIVING/DINING:

- ◆ Good quality vitrified tile flooring and skirting (2'-0"x2'-0")

BEDROOMS :

- ◆ Good quality vitrified tile flooring and skirting (2'-0"x2'-0")

KITCHEN:

- ◆ Good quality vitrified tile flooring
- ◆ Good quality Ceramic Wall Tiling 2 feet dado above platform area
- ◆ Black granite platform with stainless steel single bowl sink with drain board

TOILETS:

- ◆ Good quality ceramic anti skid tile flooring
- ◆ Good quality ceramic wall tiling upto 7' height

BALCONIES/UTILITIES :

- ◆ Good quality ceramic anti skid tile flooring and skirting
- ◆ MS handrail as per design

DOOR & WINDOWS :

- ◆ Main door frame and shutters is of good quality teak wood with melamine polish
- ◆ Bed room/utility/door frames of teak wood and shutters of flush doors
- ◆ Water Proof flush door shutters for toilets
- ◆ UPVS windows with 5mm thick glass

PAINTING

- ◆ INTERIORS-One coat of wall primer.Two coats of wall Putty with premium emulsion of Reputed Brand.
- ◆ EXTERIORS-One coat of wall primer with emulsion (APEX) of reputed brand

PLUMBING & SANITARY :

- ◆ Good quality CP fitting & PVC/CPVC drainage & storm water pipes
- ◆ All water supply lines are PVC/CPVC of reputed make
- ◆ European Wc's, wash basin of ISI approved or equivalent
- ◆ Other sanitary fixtures of good quality & reputed make in all toilets
- ◆ SS/chromium plated fittings of reputed make in all toilets

ELECTRICAL :

- ◆ Miniature circuit breaker (MCB) provided at the main distribution box be within each flat
- ◆ Individual meter provision for individual flats
- ◆ The electrical provisions would be of anchor or equivalent make
- ◆ Good quality insulated wires from Orbit or equivalent make with concealed pipes
- ◆ Provision for exhaust fans in kitchen and bathrooms
- ◆ Provision of electrical point for home accesories, lightning requirements, television, telephone in master bedrooms and living room
- ◆ Provision for inverter

WATER SUPPLY:

- ◆ Water supply through bore well, sump, common over head tank

LIFT:

- ◆ Johnson or Equivalent make elevators

LANDSCAPE:

- ◆ Landscaping will be provided at suitable locations

KEYPLAN

